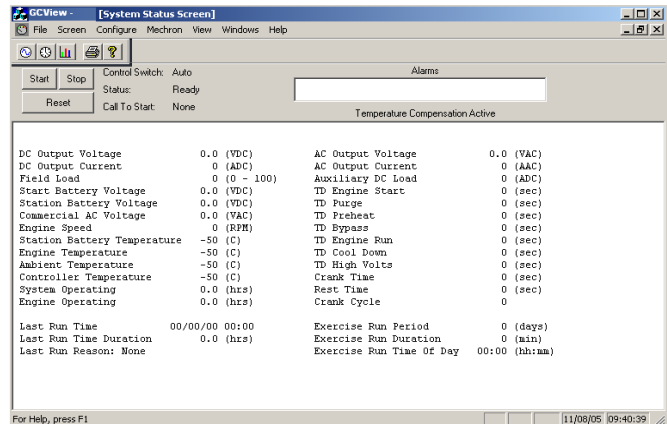


The GC View remote monitoring and control software application is designed for use with the GC series controllers. The viewer provides a remote operator the ability to review generator status, alarms, and to control and configure set points. This user-friendly package can be easily installed on Windows-based personal computers. The package can be immediately configured to either dial into or out of the site or connect directly to generator while on site as a system diagnostics tool.



SPECIFICATIONS

Remote Status Monitoring

GC View provides full status screens on critical engine data such as:

- Generator Output Voltage and Current
- Start Battery Voltage
- Battery and Engine Temperature
- Engine Speed
- System and Engine Operating Hours
- Field Excitation Percentage, Controller Number
- Engine Timers (Time Delay Engine Start, Purge, Preheat, Bypass, Cooldown, Engine Run, Crank Time, Rest Time, Crank Cycles)

Trending

GC View can be configured to automatically dial and record all status data display and append it to a CSV file. Mechron offers an optional Trend and Report software package for generating alarming reports and system trending reports.

Remote Set-point Adjustment

All configuration points and alarms can be configured via GC View. It allows for remote adjustment of generator set-points, including:

- Low Station Battery Call To Start/Remove Voltage Level
- Low Temperature Call To Start and Remove Level
- Low Start Battery Call To Start and Remove Level
- Finish Current Level
- High Voltage Level
- Current Limit Level
- Fan Damper Set-point
- Equalize Voltage
- Float Voltage
- The user can also enable / disable all calls to start
- All Remote Status Timer Values

Remote Generator Control

GC View provides remote control over generator set operation, including remote start and stop capabilities. GC View can be used with a phone switch to allow the viewer to monitor two units over one phone line. This functionality is built into GC View.

Remote Fault Reset and Alarming

If the generator signals a generator fault via dry contact the operator can dial into controller review and reset fault condition. GC View can be setup in standby mode to automatically receive alarms from a GC series controller.

Password Control

Password control is available to limit access to remote monitoring, control and set-point adjustment.

Online Help

GCView is provided with a complete set of operating instructions that can be printed if desired.

Documentation

Installation and Operating Procedures are provided with the installation CD.

System Requirements

Operating System: Windows 2000/XP/98 OS
 Hardware: IBM or Compatible PC, 32 MB RAM, 30 MB Available Hard Disk Space, CD ROM Drive

Communications

Direct Connection: Standard RS232 DB9F
 Modem Connection: 1200 to 56K Baud
 RS232 DB9F
 Controller Baud rate can be modified from GC View.
 GC View is also TCP/IP ready for LAN based networks.